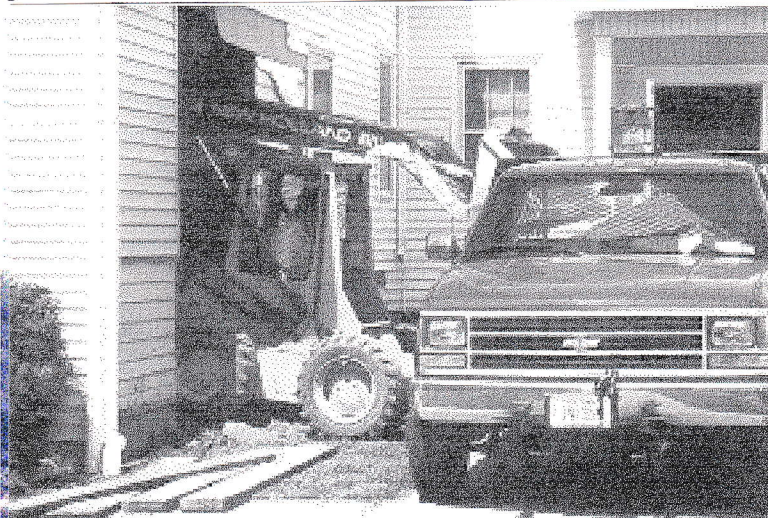


The Renovation News

The First Presbyterian Church
Bergen, New York

Issue Number 2
July, 1996

Progress: Since our last newsletter a lot of progress has been made. All of the flooring, interior wall surfaces, and ceilings have been removed from the kitchen and the Fellowship Hall, and the new basement area has been completely excavated. Anyone who has looked into this area will see a huge, open space with one (perhaps two) large pieces of excavating equipment down in the pit where our new basement will be. Much thanks is due to Dan Sheldon and the many volunteers who have contributed hundreds of hours to this effort. Particular thanks go to Jeff and Fred Ely and to Dave Wohlers for the contribution of their time and equipment to accomplish this excavation. Watching the large dirt pile on the front lawn grow and diminish as the dirt is dug out and trucked away gives a good indication of what has been accomplished. We can only hope that Fred and Jeff figure out a way to get their beautiful red back-hoe out of the basement before it becomes a permanent fixture of our new facility!



It is worth noting, and applauding, that ALL of the work to this point (except for the masonry work which has just begun) has been volunteer labor contributed by many in our church family.

The focus of the effort is now on the masonry work in the new basement. Ron Spink and Ron, Jr. have poured footers in the basement and are now building the new cement block walls. Next on the list for the volunteers is some hand work in the newly excavated area to get it ready for the masons, and removal of the debris that has accumulated in the basement area. Soon we will start removing the remaining walls and ceiling in the Fellowship Hall.

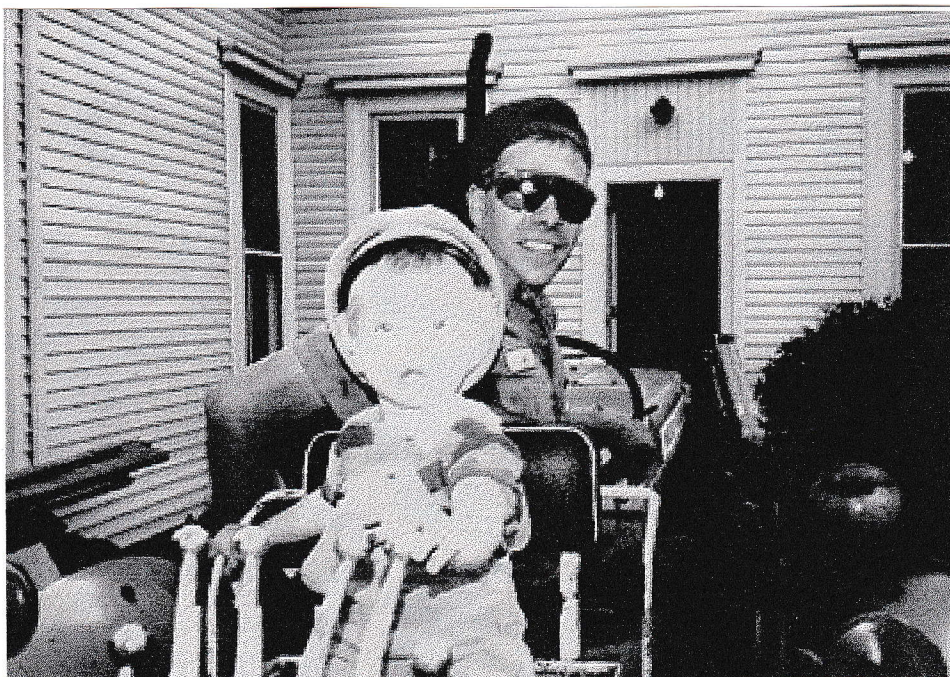
Capital Fund Drive: A team of people has been brought together to plan and run the capital fund drive needed to restore the Endowment Fund as money is withdrawn to finance the project. Tom Taylor will be heading up the effort, and will bring a wealth of professional experience, and a deep commitment to this task. He is currently Director of Development for the School of Pharmacy at the U. of Buffalo, and prior to that had similar fund-raising responsibilities for five years at St. Jerome Hospital in Batavia. Working with Tom will be a team that currently includes Fred Ely, Tom Jones, Gregg McAllister, Ruth Morse, and Harris Wilcox. More may be added to the effort as the planning process begins in earnest this month. We are looking forward to kicking off the Drive in the fall, probably October.

Project Costs: Total cost of the project to date, including all of the engineering studies that have been carried out in the past two and one-half years, is about \$44,000. Of this, \$40,000 has been for engineering and architectural work, which should be about complete. About \$2500 has been for materials, \$1000 for trash removal and \$470 for the building permit from the Village of Bergen. To provide the funds needed, \$10,000 was withdrawn from the Richards Fund in our endowments last year, and \$34,000 has been withdrawn this year. Since most of the remaining \$200,000 in the Richards Fund is very productively invested in good stocks that are growing as the market grows, further funding in the near future will use a line-of-credit account with the Bank of Castile. This loan account will be available as we need it at prime

rate (currently 8.25%), and we will need to pay only the monthly interest until proceeds from our capital fund drive begin to come in, hopefully soon after we begin the drive later this year. In this way we can leave our investments in the Richards Fund where they should grow at a rate greater than the interest charged on the line of credit.

Work Schedule: The Spink's work in the basement is progressing well, and most of the masonry work in the newly excavated basement should be completed by mid-to-late July. The installation of the new floor will begin as the masonry work nears completion. We hope that some of the basement, possibly including some of

the new basement area, will be available as open space for Vacation Bible School in August. We also are working towards having the newly rebuilt restrooms on the first floor ready for VBS. Structural work in the roof area over the Fellowship Hall can commence once the foundation and new floor are in.



One of our Younger Volunteers

The need for willing volunteers continues! We have undoubtedly saved many tens of thousands of dollars thus far due to the commitment of our volunteers. All are welcome to help every Thursday evening and Saturday morning, and at other times that can be scheduled with Dan Sheldon (494-2442).

Some Historical Tidbits: It is interesting to note that this fellowship hall wing of our church began its life as a sanctuary building at a different location, as did our sanctuary, about 150 years ago. It was built by a splinter group from the congregation that was then housed in our current sanctuary when it was on the hill of the current Mt.

Rest Cemetery. Apparently there

was strong disagreement over slavery and women's rights issues, and in 1845 a group separated itself from the congregation on the hill and built what is now our Fellowship Hall on Apple Tree Road (near what is now the intersection of routes 19 and 33). About ten years later in the mid-1850's, what had been separated came back together - but more about this in a later issue of *The Renovation News*.

*First Presbyterian Church
38 South Lake Avenue
Box 26
Bergen, NY 14416*

*Non-Profit Organization
U.S. Postage Paid
Bergen, NY 14416
Permit #12*

The Renovation News

Issue #2 - July, 1996