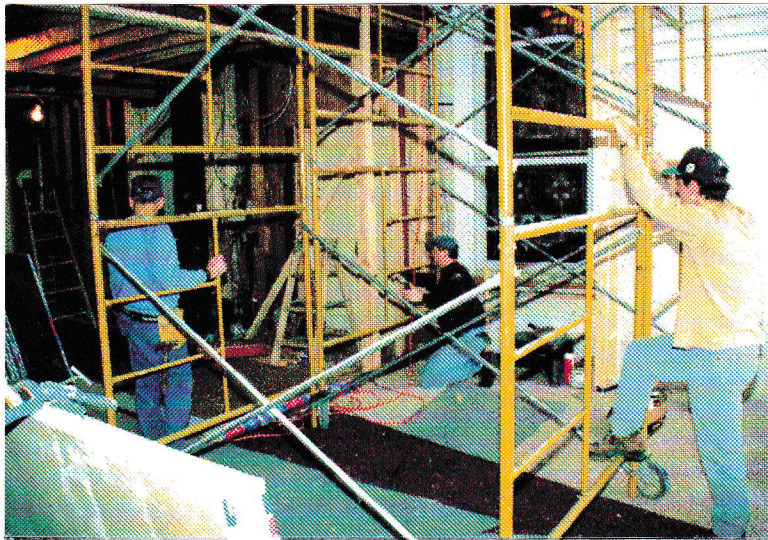


The Renovation News

The First Presbyterian Church
Bergen, New York

Issue Number 17
January, 1998

RECENT PROGRESS: In the two months since the last issue of The Renovation News, there has been a lot accomplished in the project. Most obvious is the work in the new



expanded center entranceway and stairways to the basement and second floor. Saturday, December 13 was a big workday for the volunteer crew, and much of the drywall in the entranceway was installed. We can now get a good idea of how attractive and spacious this new area is. The new exterior doors and windows are particularly attractive. On Sunday mornings between services it has already become a wonderful area for welcoming and fellowship.

Scaffolding in Center Foyer

A group of 15-20 workers spent most of that Saturday attacking many jobs - helped in no small measure by the catered pizza lunch. Electricians worked on the wiring, Eunice Ely was varnishing the cherry wood for the window trim in Fellowship Hall, and Lenny Brill and his plumbers made a lot of progress on the first floor and basement restrooms. In fact, these restrooms are now all operational.

A special word is deserved for the cherry wood trim being formed and installed in the Hall. The cherry lumber came from Ted Anderson (Mark's dad), with a lot of the subsequent carpentry by Fred Ely. The lower

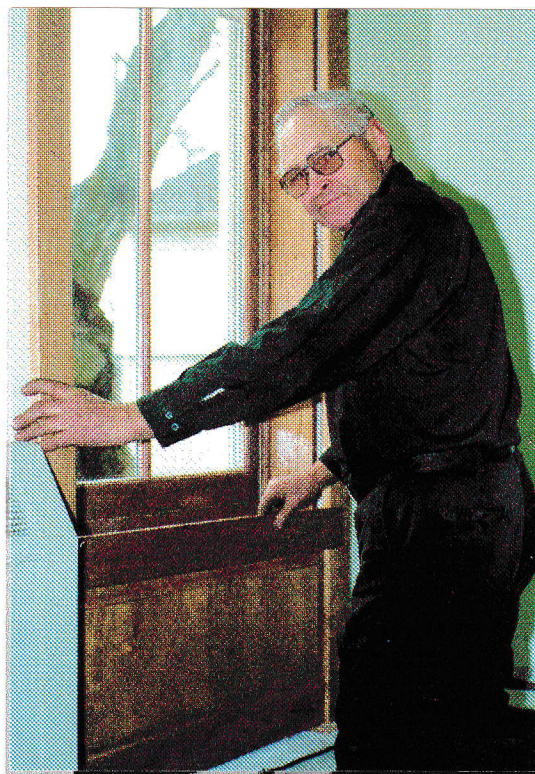


Drywalling Crew

panels were formed by Dan Sheldon with equipment available at Roberts Wesleyan, and the decorative corner blocks will be created by Dave Marsh. Much of the varnishing was carried out by Eunice Ely, and Dwight Banister of Kaiser-Wilcox has done most of the

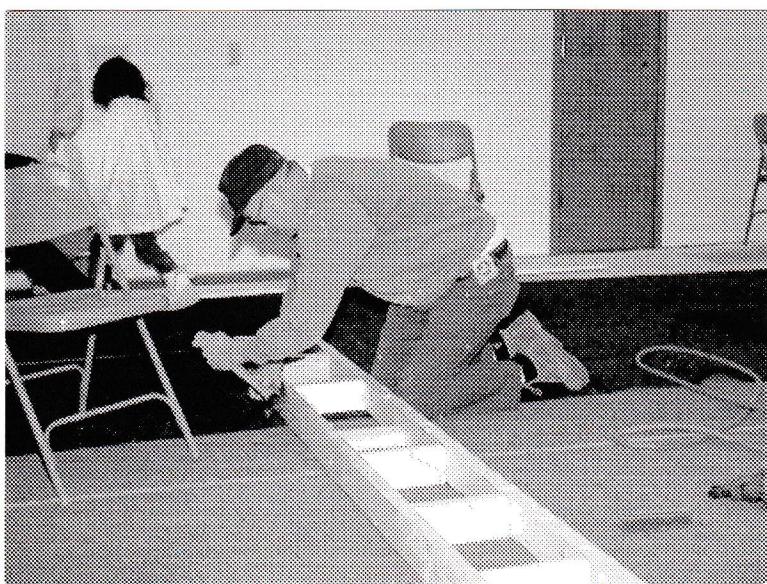
installation work. Truly, these beautiful windows are the result of loving care and skill by many in the Bergen community.

FINANCIAL REVIEW: To date the renovation has expended about \$365,000 (details in the chart below). There are some major expenses still to come, primarily the equipment for the kitchen, and carpeting for the first floor entryways and the Fellowship Hall. The loan with the Bank of Castile remains at \$270,000; however, we may be able to start paying down the principal in the near future as income from the Renovation Fund Drive has picked up. Income to date is about \$77,000 - pledges to the Fund Drive are \$177,439.



Dwight Banister & New Cherry Window Trim

Basement Contractor	34,408.00	Finishing Labor	7,166.00	Kitchen Equip.	795.69
Basement Materials	29,684.54	Finishing Materials	20,534.24	Loan Interest	23,292.02
Architects	34,539.73	Front Entry Extension	19,943.92	Management	18,261.76
Prel. Arch. & Eng. Studies	7,840.00	General Lumber	11,030.84	Miscellaneous	2,742.16
Electrical Work	37,088.72	General Materials	7,443.97	Plumbing	12,627.55
Fellowship Hall Labor	2,771.50	Handicapped Lift	11,100.00	Rear Entryway	3,448.00
Fellowship Hall Materials	21,547.62	Heating System	59,417.14	Total	\$365,683



Bill Waldruff - Carpenter

GIFT OPPORTUNITIES: The Wish List, which is reproduced on the next page, has brought forward some generous gifts, including the new double doors in the center entrance, the half-round windows over both the center entrance and the Fellowship Hall entrance, and the interior lighting which will be installed behind the two "inside" stained glass windows in the sanctuary.

A matching set of double doors for the Hall entrance itself would be a nice addition, and a gift to help us complete that would be a wonderful addition. and much appreciated.

The Wish List

- * New Hall and Kitchen Windows -- \$600@
- >>>> * New Double Front Doors for Hall -- \$1200 <<<<
- * Half-round Window over Hall Front Doors -- \$500 (gifted)
- * Front Doors for Center Addition -- \$2000 (gifted)
- * Half-round Window over Center Front Doors -- \$800 (gifted)
- * Back-lighting for the Two New "Interior" Stained-glass Windows -- \$500(gifted)
- >>>> * Folding Walls for Two Basement Rooms -- \$1200-1500@ <<<<
- * New Carpet for all New & Renovated Areas -- \$10,000
- * Plants & Shrubs for Landscaping -- \$25 - \$100 - \$500
- * Pastor's Office Furniture -- \$2000
- * Kitchen Cabinets & Equipment -- (to be determined)
- * Equipping Sunday School Rooms -- \$50 - \$250 - \$1000

We also want to highlight the need for folding walls for the basement class rooms. Our very active and growing Christian Education Program has already grown beyond our new space, and we need to divide each of the two new large basement rooms into two smaller rooms to accomodate our many Sunday School classes. The space and room design for these doors was built into the renovation plans; however, we did not think we would need them this soon. If you can contribute to this need, please contact Ruth Morse, Tom Jones, or Dan Sheldon. Thanks very much.

EDITORIAL NOTE: As the renovation project nears completion and the rate of visible changes to our facility slows down, publication of The Renovation News will change to a bimonthly schedule. Look for the next edition in early March.

*First Presbyterian Church
38 South Lake Avenue
Box 26
Bergen, NY 14416*

The Renovation News
Issue #17 - January, 1998